



METAS VNA Data Explorer - User Manual V3.0.1

Michael Wollensack

January 2026

Contents

| | | |
|----------|------------------------------------|----------|
| 1 | Installation | 2 |
| 1.1 | System Requirements | 2 |
| 1.2 | Steps | 2 |
| 2 | Overview | 3 |
| 2.1 | Filetypes | 3 |
| 2.2 | File Explorer | 3 |
| 2.2.1 | Content Menu | 4 |
| 3 | Visualization | 6 |
| 3.1 | Modes | 6 |
| 3.1.1 | Graph | 6 |
| 3.1.2 | Table | 8 |
| 3.1.3 | Point | 10 |
| 3.1.4 | Covariance | 11 |
| 3.1.5 | Noise Graph | 12 |
| 3.1.6 | Noise Table | 14 |
| 3.1.7 | Info | 15 |
| 3.2 | Time Gating | 16 |
| 3.3 | Passive Noise Parameters | 17 |
| 3.4 | Math | 18 |
| 3.5 | Uncertainty | 19 |



1 Installation

1.1 System Requirements

The following list describes the minimum software and hardware requirements of the METAS VNA Data Explorer.

- Microsoft Windows 7 (64 Bit)
- Microsoft .NET Framework 4.6.2
- Microsoft Windows Installer 4.5
- At least 512 megabytes (MB) of RAM (1024 MB is recommended)
- At least 100 megabytes (MB) of available space on the hard disk
- Video adapter and monitor with SVGA (800 x 600) or higher resolution (1280 x 1024 is recommended)

1.2 Steps

The following steps describe the installation of METAS VNA Data Explorer.

1. Double-click on the METAS VNA Data Explorer setup program
2. Accept license agreement
3. Select installation folder
4. Confirm installation
5. Installation complete

After installation, one can start METAS VNA Data Explorer by double-clicking on its desktop shortcut.



2 Overview

The METAS VNA Data Explorer is designed to visualize S-parameter files. The graphical user interface is split up into two parts. The file explorer is on the left and the visualization with different tabs is on the right.

2.1 Filetypes

Table 1 shows the supported file types. S-Parameter Data files can only contain S-parameter

Table 1: File types

| Description | Extension |
|--|--------------|
| S-Parameter Data Binary | (.sdatb) |
| S-Parameter Data Xml | (.sdatx) |
| S-Parameter Data Covariance Text | (.sdatcv) |
| S-Parameter Data Touchstone | (.s*p) |
| S-Parameter Data Touchstone V2.0 | (.ts) |
| VNA Calibration Data Binary | (.calb) |
| VNA Data Binary | (.vdatb) |
| VNA Data Xml | (.vdatx) |
| VNA Data Covariance Text | (.vdatcv) |
| VNA Data CITI | (.cti;.citi) |
| S-Parameter Data and Noise Parameter Data Binary | (.sndatb) |
| S-Parameter Data and Noise Parameter Data Xml | (.sndatx) |
| VNA Data and Noise Parameter Data Binary | (.vndatb) |
| VNA Data and Noise Parameter Data Xml | (.vndatx) |
| S-Parameter Data Collection Binary | (.scolb) |
| S-Parameter Data Collection Covariance Text | (.scolcv) |
| VNA Data Collection Binary | (.vcolb) |
| VNA Data Collection Covariance Text | (.vcolcv) |
| ZIP with embedded data files | (.zip) |
| PDF with embedded data files | (.pdf) |

data. In contrast VNA Data files can contain receiver values and ratios of receiver values.

2.2 File Explorer

The following user controls are available:

Root Path sets the root directory.

Help contains the following items: User Manual, Data Formats, Website, License and About.

Collapse All collapses all tree nodes.

Auto Refresh refreshes the file explorer on the left (default: on).



METAS VNA Data Explorer - User Manual V3.0.1

Auto Update Panel updates the visualization tabs on the right (default: on).

Sort Selected Items sorts the selected items (default: on).

Ignore Port Assignment ignores the port assignment from the selected data files (default: off).

Filter sets file filter (default: *.*).

Freq List Browse can be used to select a frequency list file (*.fl). All selected files in the tree view will be interpolated (default: None).

Freq List On turns frequency list interpolation on or off (default: off).

Tree View can be used to select one or multiple files. Additional files can be selected while holding the Ctrl or Shift key.

2.2.1 Content Menu

The content menu of the File Explorer provides some tools for post processing of data sets. All post processing tools propagate the uncertainties of the inputs to the results. The following tools are available:

Show in Windows Explorer shows a file or directory in the Windows Explorer.

Set as Root Path sets the current directory as root path.

New Folder creates a new folder in the current directory.

New Shortcut creates a new shortcut in the current directory.

Save Data As ... saves the current file in another file. Supported file formats are S-Parameter Data (*.sdatb or *.sdatx), S-Parameter Data Covariance Text (*.sdatcv), Touchstone (*.s1p, *.s2p, *.s*p), Touchstone V2.0 (*.ts), VNA Data (*.vdatb or *.vdatx), VNA Data Covariance Text (*.vdatcv), CITI (*.cti or *.citi), S-Parameter Data and Noise Parameter Data (*.smdatb or *.smdatx) or VNA Data and Noise Parameter Data (*.vndatb or *.vndatx).

Save Collection As ... saves the current files in a collection file. Supported file formats are S-Parameter Data Collection (*.scolb), S-Parameter Data Collection Covariance Text (*.scolcv), VNA Data Collection (*.vcolb) or VNA Data Collection Covariance Text (*.vcolcv).

Frequency and Port Definitions shows the port assignment, the port reference impedance and the frequency conversion per port.

Change Port Assignment changes the port assignment and a subset can be taken¹. The new ports can be optionally sorted in the following order: port number, port mode (s, d, c).

Change Port Zr changes the reference impedance by cascading a transmission line junction to each port or simply reassigns the reference impedance to a specified complex value in Ohm.



METAS VNA Data Explorer - User Manual V3.0.1

Mixed-Mode S-Parameters converts single-ended S-parameters to mixed-mode S-parameters or vice versa.

Time Gating does a transformation from frequency domain to time domain, gates the data in time domain and transforms it back to frequency domain. See section 3.2.

Generate Passive Noise Parameters computes noise parameters from passive S-parameter data, see section 3.3.

Math provides the following math tools:

Add (1st + 2nd) adds N -port 1 and N -port 2.

Subtract (1st - 2nd) subtracts N -port 2 from N -port 1.

Subtract (2nd - 1st) subtracts N -port 1 from N -port 2.

Multiply (1st x 2nd) multiplies N -port 1 with N -port 2.

Divide (1st / 2nd) divides N -port 1 by N -port 2.

Divide (2nd / 1st) divides N -port 2 by N -port 1.

where 1st and 2nd are referring to the order of the two selected files.

Cascade provides the following cascade tools:

Cascade (1st and 2nd) cascades $2N$ -port 1 with N -port 2 or cascades 2-port 1 with 2-port 2.

Cascade (2nd and 1st) cascades $2N$ -port 2 with N -port 1 or cascades 2-port 2 with 2-port 1.

Cascade (inv(1st) and 2nd) cascades inverted $2N$ -port 1 with N -port 2 or cascades inverted 2-port 1 with 2-port 2.

Cascade (inv(2nd) and 1st) cascades inverted $2N$ -port 2 with N -port 1 or cascades inverted 2-port 2 with 2-port 1.

Cascade (1st and inv(2nd)) cascades N -port 1 with inverted $2N$ -port 2 or cascades 2-port 1 with inverted 2-port 2.

Cascade (2nd and inv(1st)) cascades N -port 2 with inverted $2N$ -port 1 or cascades 2-port 2 with inverted 2-port 1.

where 1st and 2nd are referring to the order of the two selected files.

Make Reciprocal makes an N -port reciprocal ($S_{jk} = S_{kj}$).

Merge (lower and upper) merges two data sets at a given frequency point.

Mean Data Set computes the mean of a data set.

Circle Fit Data Set computes the circle fit of a data set consisting of at least 3 measurements. The circle fit supports N -port data set where one port is terminated by a sliding load.

Properties shows the file or directory properties.

¹only single-ended S-parameter data



METAS VNA Data Explorer - User Manual V3.0.1

3 Visualization

3.1 Modes

METAS VNA Data Explorer supports different view modes:

Graph shows a graphical visualization of multiple files, see section 3.1.1.

Table shows a tabular visualization of a single file, see section 3.1.2.

Point shows an uncertainty budget for one frequency point and one parameter of a single file, see section 3.1.3.

Covariance shows a covariance matrix for a single frequency point or a single parameter of a single file, see section 3.1.4.

Noise Graph shows a graphical visualization of the noise parameters of multiple files, see section 3.1.5.

Noise Table shows a tabular visualization of the noise parameters of a single file, see section 3.1.6.

Info shows file information including MD5 checksum of multiple files, see section 3.1.7.

3.1.1 Graph

The graph tab supports multiple selected files, see figure 1. The following user controls are

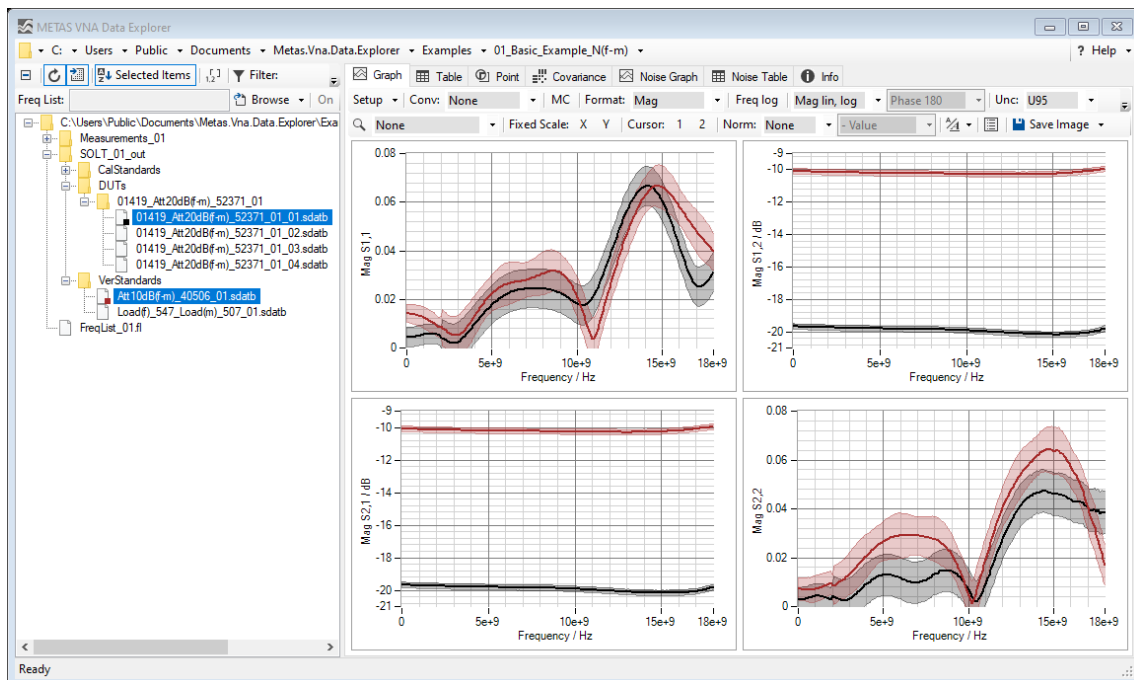


Figure 1: Data Explorer / Graph

available:



METAS VNA Data Explorer - User Manual V3.0.1

Setup sets up the plots (default: S_{x,x} Ports: 1, 2).

Conv sets the conversion to None, S/S', Passivity Check, Absorbed Power, Z-Parameter, Y-Parameter, Impedance, Admittance, Time Domain, Time Domain Impedance or Time Domain Admittance (default: None). See section 3.4 for more information.

MC sets the uncertainty propagation to Monte Carlo for formatting a complex quantity. Correlation between frequency points and different traces are ignored.

Format sets the data format to Real Imag, Mag Phase, ReIm MP (reflection real imag and transmission mag phase), Real, Imag, Mag, Phase or Cartesian (default: Mag Phase).

Freq log sets the frequency axis to linear or logarithmic (default: Freq lin).

Mag format sets the magnitude format to Mag lin (reflection and transmission linear), Mag log (reflection and transmission logarithmic), Mag lin log (reflection linear and transmission logarithmic), Mag² (reflection and transmission linear²), VSWR lin (reflection VSWR and transmission linear) or VSWR log (reflection VSWR and transmission logarithmic) (default: Mag lin).

Phase format sets the phase format to Phase 180, Phase 360, Phase Unwrap, Phase Delay or Group Delay (default: Phase 180).

Time Domain Mode sets the time domain mode to Low Pass Step, Low Pass Impulse or Band Pass Impulse (default: Band Pass Impulse).

Window sets the window function used for transforming from frequency domain to time domain to Rectangular, Triangle, Hann, Hamming, Blackman, Blackman Harris, Blackman Nuttall, Exact Blackman, Flat Top, Minimum Kaiser ($\beta = 0$), Normal Kaiser ($\beta = 6$) or Maximum Kaiser ($\beta = 13$) (default: Normal Kaiser).

Unc sets the uncertainty mode to None, Standard or U95 (default: None).

Interaction Mode sets interaction mode to None, Zoom or Pan (default: None).

Fixed Scale activates or deactivates automatically scaling of the x- and y-axis.

Cursor shows or hides one or two cursors.

Norm normalizes all traces to one selected trace or to the mean value of all traces (default: None).

Norm Mode set the normalization mode to:

- **Value** subtracts the value from the dataset.
- **(Value + Unc)** subtracts the value and uncertainty from the dataset.
- / **Value** the dataset is divided by the value.
- / **(Value + Unc)** the dataset is divided by the value and uncertainty.

Font specifies the font for the current plots.

Legends shows or hides the legend.



METAS VNA Data Explorer - User Manual V3.0.1

Save Image saves the current plots to a bitmap file. Supported file formats are BMP, JPG and PNG.

Copy Image copies the current plots to the clipboard.

Table 2 shows the different colors for each trace and its associated uncertainty region.

Table 2: Trace Colors

| Trace | Value | Unc | Color |
|-------|-------|-----|------------|
| 1 | | | black |
| 2 | | | brown |
| 3 | | | red |
| 4 | | | orange |
| 5 | | | yellow |
| 6 | | | green |
| 7 | | | blue |
| 8 | | | violet |
| 9 | | | gray |
| 10 | | | light gray |

3.1.2 Table

The first of the selected files will be shown in the table view, see figure 2. The following user controls are available:

Conv sets the conversion to None, S/S', Passivity Check, Absorbed Power, Z-Parameter, Y-Parameter, Impedance, Admittance, Time Domain, Time Domain Impedance or Time Domain Admittance (default: None). See section 3.4 for more information.

MC sets the uncertainty propagation to Monte Carlo for formatting a complex quantity.

Format sets the data format to Real Imag, Mag Phase, ReIm MP (reflection real imag and transmission mag phase) or Mag (default: Mag Phase).

Mag format sets the magnitude format to Mag lin (reflection and transmission linear), Mag log (reflection and transmission logarithmic), Mag lin log (reflection linear and transmission logarithmic), Mag^2 (reflection and transmission linear²), VSWR lin (reflection VSWR and transmission linear) or VSWR log (reflection VSWR and transmission logarithmic) (default: Mag lin).

Phase format sets the phase format to Phase 180, Phase 360, Phase Unwrap, Phase Delay or Group Delay (default: Phase 180).

Time Domain Mode sets the time domain mode to Low Pass Step, Low Pass Impulse or Band Pass Impulse (default: Band Pass Impulse).



METAS VNA Data Explorer - User Manual V3.0.1

| Frequency / MHz | S1.1 Zr: 50 Ohm Mag | S1.1 Zr: 50 Ohm Phase / ° | S2.1 Zr: 50 Ohm Mag / dB | S2.1 Zr: 50 Ohm Phase / ° | S1.2 Zr: 50 Ohm Mag / dB | S1.2 Zr: 50 Ohm Phase / ° | S2.2 Zr: 50 Ohm Mag |
|-----------------|---------------------|---------------------------|--------------------------|---------------------------|--------------------------|---------------------------|---------------------|
| 16 100.000 | 0.040 | 133.979 | -20.151 | -139.463 | -20.146 | -139.688 | 0 |
| 16 200.000 | 0.038 | 127.414 | -20.146 | -147.303 | -20.142 | -147.424 | 0 |
| 16 300.000 | 0.036 | 120.450 | -20.138 | -155.065 | -20.137 | -155.187 | 0 |
| 16 400.000 | 0.034 | 112.793 | -20.127 | -162.854 | -20.121 | -163.028 | 0 |
| 16 500.000 | 0.032 | 105.188 | -20.125 | -170.567 | -20.109 | -170.696 | 0 |
| 16 600.000 | 0.030 | 96.619 | -20.110 | -178.402 | -20.109 | -178.615 | 0 |
| 16 700.000 | 0.028 | 88.148 | -20.109 | -173.810 | -20.098 | -173.688 | 0 |
| 16 800.000 | 0.027 | 79.223 | -20.093 | -166.056 | -20.091 | -165.905 | 0 |
| 16 900.000 | 0.026 | 69.871 | -20.084 | -158.324 | -20.079 | -158.141 | 0 |
| 17 000.000 | 0.026 | 60.229 | -20.069 | -150.576 | -20.067 | -150.387 | 0 |
| 17 100.000 | 0.025 | 50.432 | -20.051 | -142.766 | -20.049 | -142.615 | 0 |
| 17 200.000 | 0.025 | 40.571 | -20.025 | -134.989 | -20.028 | -134.840 | 0 |
| 17 300.000 | 0.025 | 30.895 | -20.004 | -127.255 | -20.009 | -127.048 | 0 |
| 17 400.000 | 0.026 | 21.548 | -19.981 | -119.417 | -19.991 | -119.316 | 0 |
| 17 500.000 | 0.027 | 12.406 | -19.967 | -111.689 | -19.967 | -111.510 | 0 |
| 17 600.000 | 0.027 | 3.937 | -19.929 | -103.868 | -19.936 | -103.722 | 0 |
| 17 700.000 | 0.028 | -4.415 | -19.914 | -96.150 | -19.913 | -95.932 | 0 |
| 17 800.000 | 0.029 | -12.118 | -19.877 | -88.331 | -19.871 | -88.170 | 0 |
| 17 900.000 | 0.030 | -19.891 | -19.849 | -80.649 | -19.849 | -80.412 | 0 |
| 18 000.000 | 0.031 | -27.308 | -19.812 | -72.811 | -19.799 | -72.637 | 0 |

Figure 2: Data Explorer / Table

Window sets the window function used for transforming from frequency domain to time domain to Rectangular, Triangle, Hann, Hamming, Blackman, Blackman Harris, Blackman Nuttall, Exact Blackman, Flat Top, Minimum Kaiser ($\beta = 0$), Normal Kaiser ($\beta = 6$) or Maximum Kaiser ($\beta = 13$) (default: Normal Kaiser).

Unc sets the uncertainty mode to None, Standard or U95 (default: None).

Freq sets the frequency format to Hz, kHz, MHz, GHz or THz (default: MHz).

Time sets the time format to s, ms, us, ns or ps (default: ps).

Numeric Format sets the numeric format (default: n3).

Save Data saves the current data in a file. Supported file formats are S-Parameter Data (*.sdatb or *.sdatx), S-Parameter Data Covariance Text (*.sdatcv), Touchstone (*.s1p, *.s2p, *.s*p), Touchstone V2.0 (*.ts), VNA Data (*.vdatb or *.vdatx), VNA Data Covariance Text (*.vdatcv) or CITI (*.cti or *.citi).

Save Table saves the current formatted data in a file. Supported file formats are Text (*.txt) or LaTeX (*.tex).

Copy Table copies the current formatted data to the clipboard.

One can select one or more rows of the table and copy the data to the clipboard with Ctrl-C or with the context menu of the table. Ctrl-A selects all data.



METAS VNA Data Explorer - User Manual V3.0.1

3.1.3 Point

The first of the selected files will be shown in the point view. One can select one frequency point and one parameter and obtains the uncertainty budget of the selected data point, see figure 3. The following user controls are available:

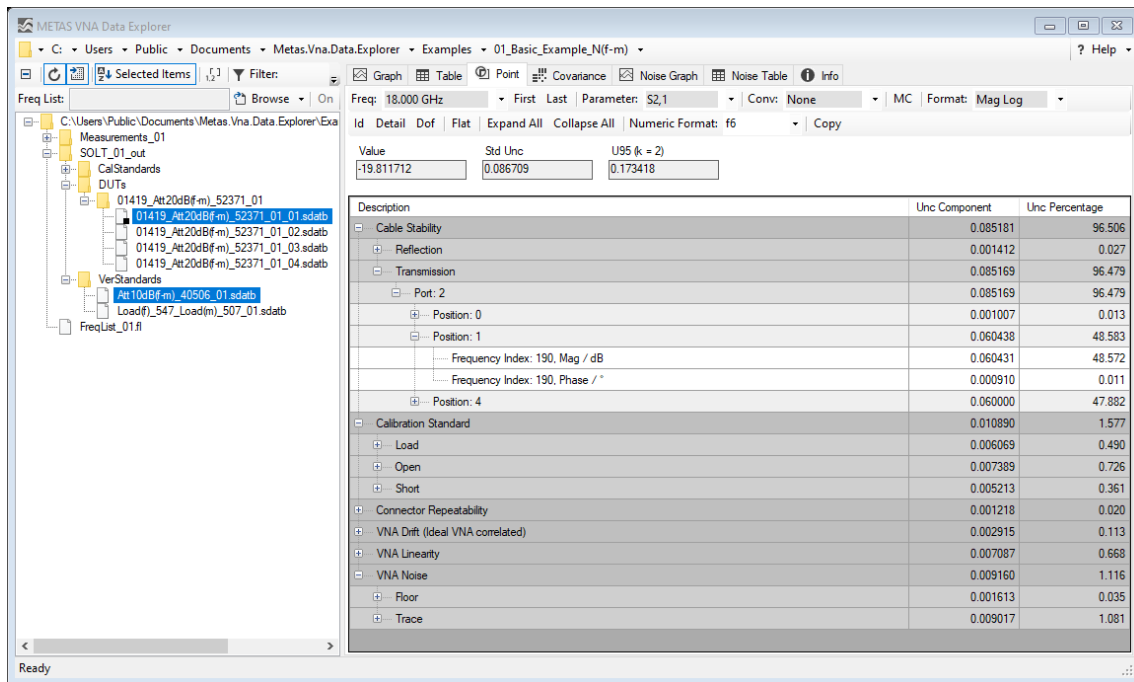


Figure 3: Data Explorer / Point

Freq selects a frequency point for the uncertainty budget (default: None).

Time selects a time point for the uncertainty budget (default: None). Only visible when conversation is set to Time Domain.

First selects the first frequency or time point.

Last selects the last frequency or time point.

Parameter selects a parameter for the uncertainty budget (default: None).

Conv sets the conversion to None, S/S', Passivity Check, Absorbed Power, Z-Parameter, Y-Parameter, Impedance, Admittance, Time Domain, Time Domain Impedance or Time Domain Admittance (default: None). See section 3.4 for more information.

MC sets the uncertainty propagation to Monte Carlo for formatting a complex quantity.

Format sets the format to Real, Imag, Mag, Mag log, Mag², VSWR, Phase, Phase 360, Phase Unwrap, Phase Delay or Group Delay (default: Mag).

Time Domain Mode sets the time domain mode to Low Pass Step, Low Pass Impulse or Band Pass Impulse (default: Band Pass Impulse).



METAS VNA Data Explorer - User Manual V3.0.1

Window sets the window function used for transforming from frequency domain to time domain to Rectangular, Triangle, Hann, Hamming, Blackman, Blackman Harris, Blackman Nuttall, Exact Blackman, Flat Top, Minimum Kaiser ($\beta = 0$), Normal Kaiser ($\beta = 6$) or Maximum Kaiser ($\beta = 13$) (default: Normal Kaiser).

Id shows or hides the uncertainty input ids (default: Hide).

Detail shows or hides the distribution, value, standard uncertainty and sensitivity columns (default: Hide).

Dof shows or hides the degrees of freedom (default: Hide).

Flat shows a flat or tree uncertainty budget (default: Tree).

Expand All expands all tree nodes.

Collapse All collapses all tree nodes.

Numeric Format sets the numeric format (default: f6).

Copy copies the uncertainty budget to the clipboard.

The following items will be shown for the selected data point:

Value indicates the value.

Std Unc shows the standard uncertainty (68% coverage factor, $k = 1$).

U95 shows the expanded uncertainty (95% coverage factor, $k = 2$).

Unc Budget shows a tabular visualization of the uncertainty budget.

3.1.4 Covariance

The first of the selected files will be shown in the covariance view. There are two modes in the covariance view. Either one can select a single frequency point and obtains the covariance matrix of multiple parameters at the selected frequency point. Or one can select all frequency points and a single parameter in the desired format and obtains the covariance matrix for the selected parameter and format over the whole frequency range, see figure 4. The following user controls are available:

Freq selects a frequency point or all frequency points for the covariance view (default: None).

All selects all frequency points.

First selects the first frequency point.

Last selects the last frequency point.

Parameter selects a parameter for the covariance view (default: None).

Format sets the format to Real, Imag, Mag or Phase (default: Mag).

Mode sets the mode to covariance or correlation (default: Covariance).



METAS VNA Data Explorer - User Manual V3.0.1

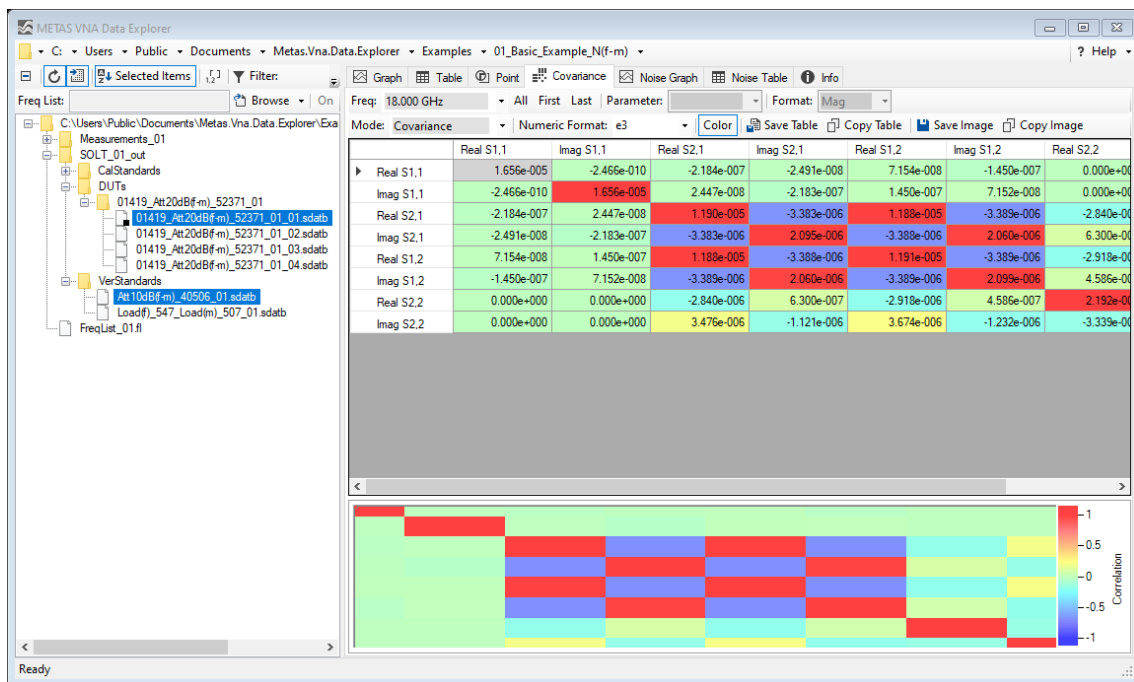


Figure 4: Data Explorer / Covariance

Numeric Format sets the numeric format (default: e3).

Color shows or hides the graphical representation of the correlation matrix (default: show).

Save Table saves the current formatted covariance in a file. Supported file formats are Text (*.txt) or L^AT_EX (*.tex).

Copy Table copies the current formatted covariance to the clipboard as text.

Save Image saves the current covariance to a bitmap file. Supported file formats are BMP, JPG and PNG.

Copy Image copies the current covariance to the clipboard as bitmap.

3.1.5 Noise Graph

The noise graph tab supports multiple selected files, see figure 5. The following user controls are available:

Freq log sets the frequency axis to linear or logarithmic (default: Freq lin).

IEEE shows the IEEE noise parameters (default).

NIST shows the NIST noise parameters.

Noise Corr. Matrix shows the noise correlation matrix. Remark: Only the first two ports are shown.



METAS VNA Data Explorer - User Manual V3.0.1

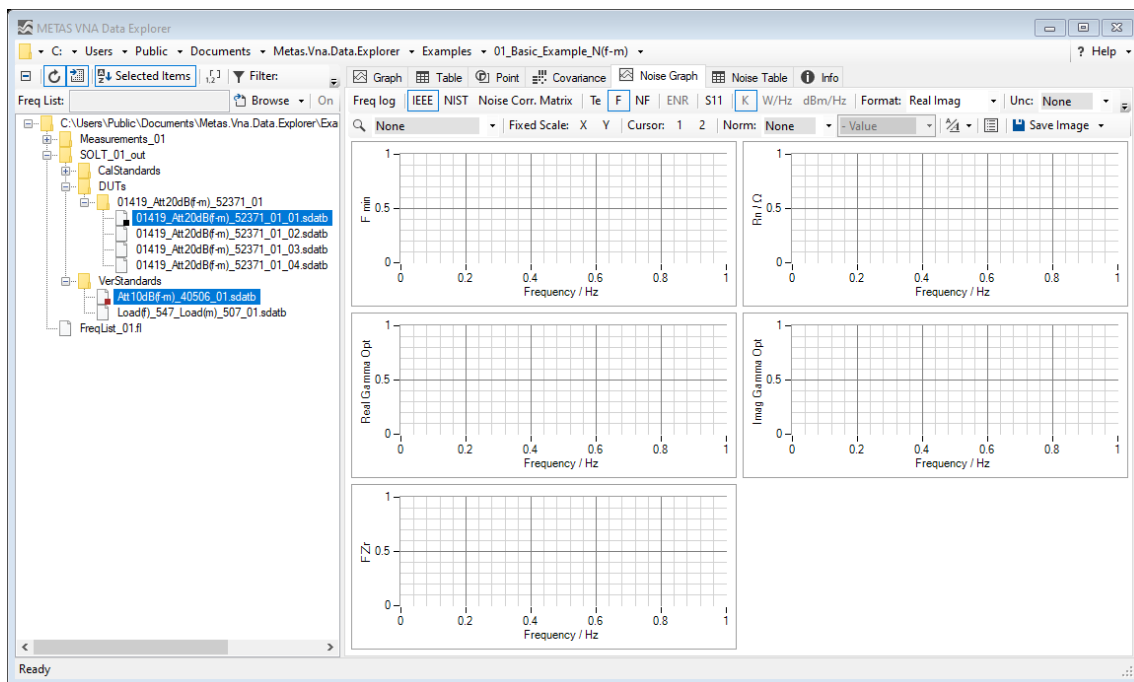


Figure 5: Data Explorer / Noise Graph

Te shows the noise temperature in kelvin.

F shows the noise factor (default).

NF shows the noise figure in dB.

ENR shows the effective excess noise ratio in dB.

S11 shows or hides the input reflection S11 (default: hide).

K shows the noise parameter as noise temperature in kelvin (default).

W/Hz shows the noise parameter as power spectral density in W/Hz.

dBm/Hz shows the noise parameter as power spectral density in dBm/Hz.

Format sets the data format to Real Imag or Mag Phase (default: Real Imag).

Unc sets the uncertainty mode to None, Standard or U95 (default: None).

Interaction Mode sets interaction mode to None, Zoom or Pan (default: None).

Fixed Scale activates or deactivates automatically scaling of the x- and y-axis.

Cursor shows or hides one or two cursors.

Norm normalizes all traces to one selected trace or to the mean value of all traces (default: None).



METAS VNA Data Explorer - User Manual V3.0.1

Norm Mode set the normalization mode to:

- **Value** subtracts the value from the dataset.
- **(Value + Unc)** subtracts the value and uncertainty from the dataset.
- / **Value** the dataset is divided by the value.
- / **(Value + Unc)** the dataset is divided by the value and uncertainty.

Font specifies the font for the current plots.

Legends shows or hides the legend.

Save Image saves the current plots to a bitmap file. Supported file formats are BMP, JPG and PNG.

Copy Image copies the current plots to the clipboard.

3.1.6 Noise Table

The first of the selected files will be shown in the noise table view, see figure 6. The following

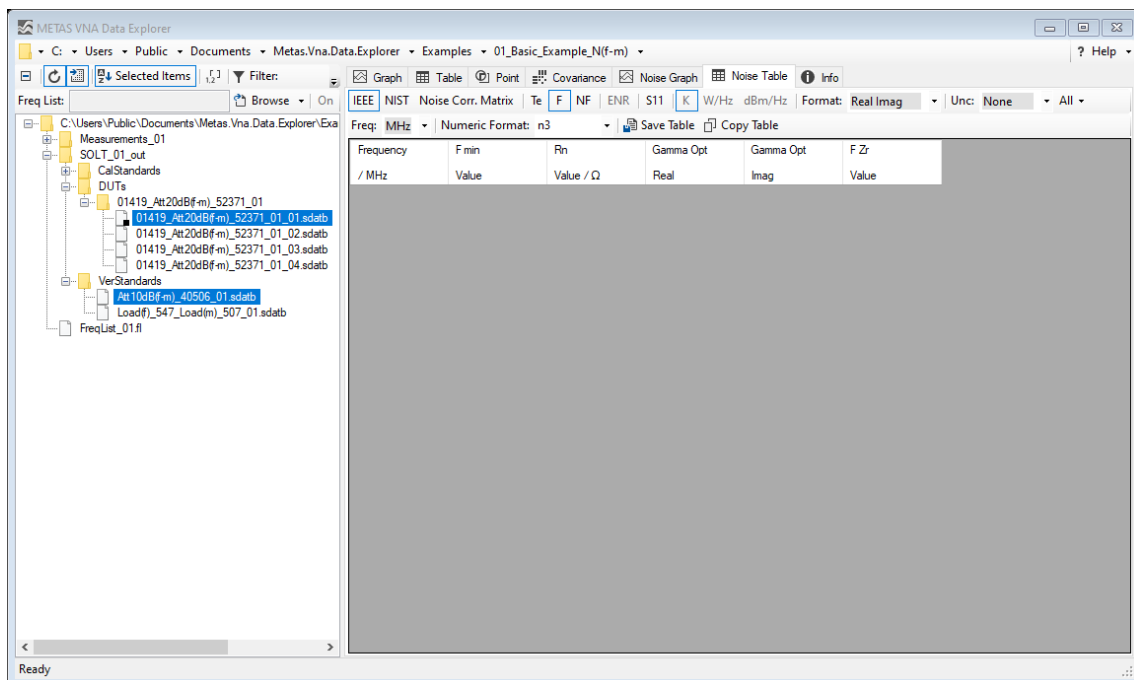


Figure 6: Data Explorer / Noise Table

user controls are available:

IEEE shows the IEEE noise parameters (default).

NIST shows the NIST noise parameters.

Noise Corr. Matrix shows the noise correlation matrix.



METAS VNA Data Explorer - User Manual V3.0.1

Te shows the noise temperature in kelvin.

F shows the noise factor (default).

NF shows the noise figure in dB.

ENR shows the effective excess noise ratio in dB.

S11 shows or hides the input reflection S11 (default: hide).

K shows the noise parameter as noise temperature in kelvin (default).

W/Hz shows the noise parameter as power spectral density in W/Hz.

dBm/Hz shows the noise parameter as power spectral density in dBm/Hz.

Format sets the data format to Real Imag or Mag Phase (default: Real Imag).

Unc sets the uncertainty mode to None, Standard or U95 (default: None).

Freq sets the frequency format to Hz, kHz, MHz, GHz or THz (default: MHz).

Numeric Format sets the numeric format (default: n3).

Save Table saves the current formatted data in a file. Supported file formats are Text (*.txt) or \LaTeX (*.ex).

Copy Table copies the current formatted data to the clipboard.

One can select one or more rows of the table and copy the data to the clipboard with Ctrl-C or with the context menu of the table. Ctrl-A selects all data.

3.1.7 Info

The info tab supports multiple selected files. One can obtain information about multiple files by holding the Ctrl or Shift key and selecting the files. The info tab shows the file name, size, modification date and computes the checksum for each selected file. See Figure 7. The following user controls are available:

Size shows or hides the file sizes (default: Show).

Data modified shows or hides the file dates (default: Hide).

Hash Algorithm specifies the used hash algorithm to compute the checksum (default: SHA-256/128).

Save Table saves the current information in a file. Supported file formats are Text (*.txt) or \LaTeX (*.tex).

Copy Table copies the current information to the clipboard.



METAS VNA Data Explorer - User Manual V3.0.1

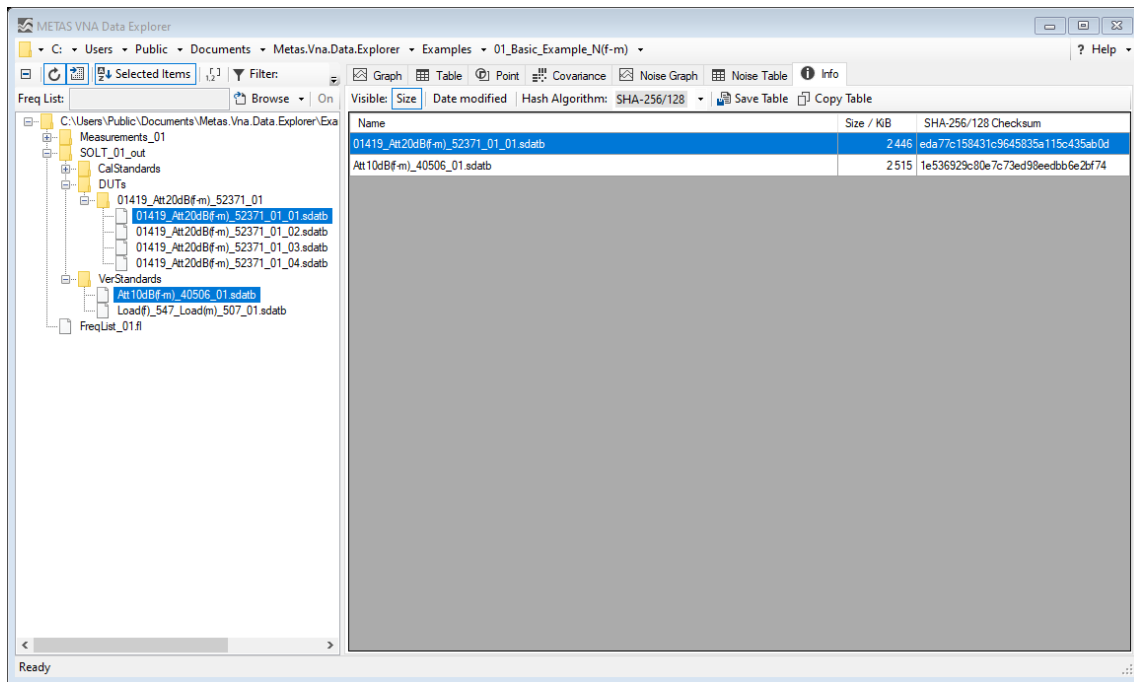


Figure 7: Data Explorer / Info

3.2 Time Gating

The dialog called Time Gating, see figure 8, is designed to gate S-parameter data in time domain and transform it back to frequency domain. The following user controls are available:

Time Domain Mode sets the time domain mode to Low Pass Step, Low Pass Impulse or Band Pass Impulse (default: Band Pass Impulse).

Center Time / s specifies the time of the center of the gate shape (default: 0 ps).

Time Span / s specifies the time span from 50 % to 50 % of the gate shape (default: 100 ps).

Delta Time / s specifies the delta time from 0 % to 50 % or from 50 % to 100 % of the gate shape (default: 20 ps). The Time Span must be at least two times the Delta Time.

Gate Type sets the gate type to Band Pass or Notch (default: Band Pass).

Uncertainties enables uncertainty propagation. Note that time gating with more than 1000 frequency points and uncertainty propagation is very memory and time consuming.

Frequency Domain shows a graphical visualization of the original data and the gated data in frequency domain.

Time Domain shows a graphical visualization of the original data, the gated data and the gate shape in time domain.



METAS VNA Data Explorer - User Manual V3.0.1

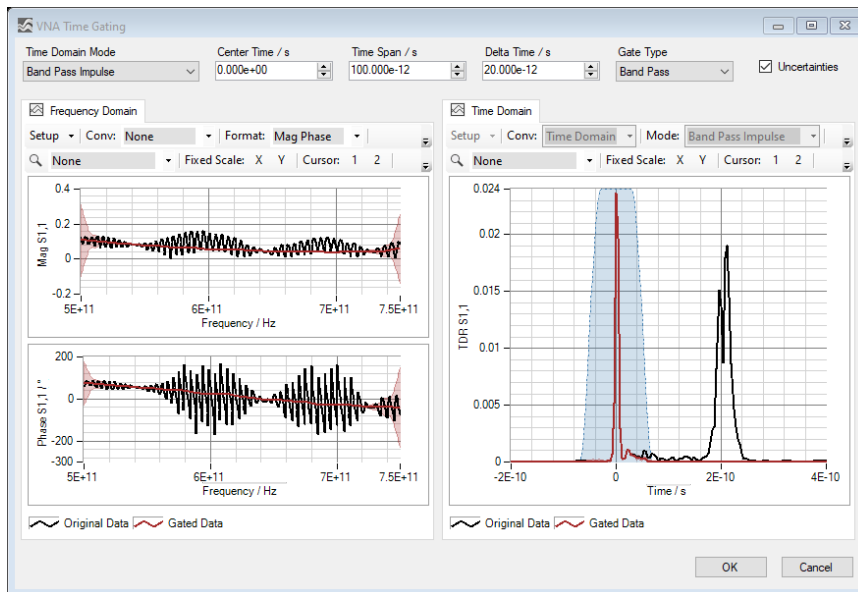


Figure 8: Data Explorer / Time Gating

3.3 Passive Noise Parameters

The dialog called Passive Noise Parameters, see figure 9, is designed to compute noise parameters from passive S-parameter data. The following user controls are available:

Physical Temperature / K sets the value and uncertainty ($k = 2$) of the physical temperature in K.

Uncertainties enables uncertainty propagation in preview graph and table.

Noise Graph shows a graphical visualization of the passive noise parameters, see section 3.1.5.

Noise Table shows a tabular visualization of the passive noise parameters, see section 3.1.6.



METAS VNA Data Explorer - User Manual V3.0.1

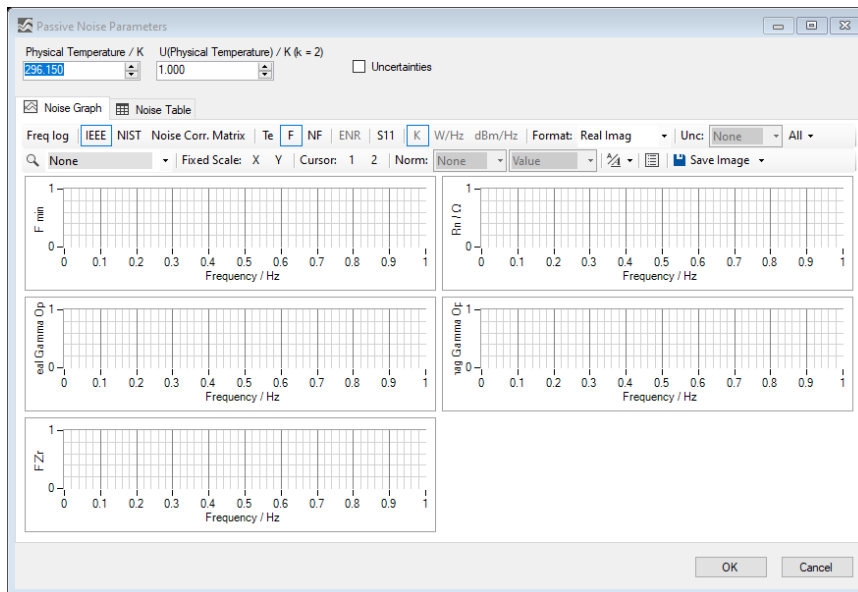


Figure 9: Data Explorer / Passive Noise Parameters

3.4 Math

The same equations are used in Graph, Table and Point tab for data conversion and formatting. Table 3 shows the equations for data conversions in METAS VNA Data Explorer. Variable x is the input quantity, y is the converted output, Z_r is the reference impedance and Y_r is the reference admittance. Index i is the frequency point, j is the receiver port and k is the source port. Table 4 shows the equations used for data formatting. Variable y is the converted input

Table 3: Conversions

| Conversion | Equation |
|-----------------|---|
| None | $y = x$ |
| S/S' | $y_{jk} = x_{jk}/x_{kj}$ |
| Passivity Check | $y_{jk} = (\text{eig}(\mathbf{I} - \mathbf{X}^* \mathbf{X}))_{jk}$ |
| Absorbed Power | $y_{jk} = (\text{AbsorbedPower}(\mathbf{X}))_{jk}$ |
| Z-Parameter | $y_{jk} = ((\mathbf{I} + \mathbf{X})(\mathbf{I} - \mathbf{X})^{-1})_{jk} Z_r$ |
| Y-Parameter | $y_{jk} = ((\mathbf{I} - \mathbf{X})(\mathbf{I} + \mathbf{X})^{-1})_{jk} Y_r$ |
| Impedance | $y = \frac{1+x}{1-x} Z_r$ |
| Admittance | $y = \frac{1-x}{1+x} Y_r$ |
| Time Domain | $y = \text{FDtoTD}(x, \text{mode}, \text{window})$ |
| TD Impedance | $y = \frac{1+t}{1-t} Z_r$ with $t = \text{FDtoTD}(x, \text{mode}, \text{window})$ |
| TD Admittance | $y = \frac{1-t}{1+t} Y_r$ with $t = \text{FDtoTD}(x, \text{mode}, \text{window})$ |

from Table 3 and z is the formatted output.



Table 4: Formats

| Format | Equation |
|------------------|---|
| Real | $z = \Re(y)$ |
| Imag | $z = \Im(y)$ |
| Mag | $z = y $ |
| Mag log | $z = 20 \log_{10} (y)$ |
| Mag ² | $z = y ^2$ |
| VSWR | $z = \frac{1+ y }{1- y }$ |
| Phase | $z = \frac{180^\circ}{\pi} \arg(y)$ |
| Phase 360 | $z = \begin{cases} \frac{180^\circ}{\pi} \arg(y) & , \arg(y) \leq 0 \\ \frac{180^\circ}{\pi} \arg(y) - 360^\circ & , \arg(y) > 0 \end{cases}$ |
| Phase Unwrap | $z = \frac{180^\circ}{\pi} \text{unwrap}(\arg(y))$ |
| Phase Delay | $z_i = -\frac{\varphi_i}{2\pi f_i}$ with $\varphi = \text{unwrap}(\arg(y))$ |
| Group Delay | $z_i = \begin{cases} -\frac{\varphi_2 - \varphi_1}{2\pi(f_2 - f_1)} & , i = 1 \\ -\frac{\varphi_{i+1} - \varphi_{i-1}}{2\pi(f_{i+1} - f_{i-1})} & , 1 < i \wedge i < n \\ -\frac{\varphi_n - \varphi_{n-1}}{2\pi(f_n - f_{n-1})} & , i = n \end{cases}$ with $\varphi = \text{unwrap}(\arg(y))$ |

3.5 Uncertainty

There are three different uncertainty modes:

None hides the uncertainty.

Standard shows the standard uncertainty. In a scalar case this means 68% coverage and $k = 1$. In a two dimensional case this means 39% coverage and $k = 1$.

U95 shows the expanded uncertainty. In a scalar case this means 95% coverage and $k = 2$. In a two dimensional case this means 95% coverage and $k = 2.45$.

Here a scalar quantity consist of only one component, e.g. magnitude of S-parameter, whereas a two dimensional quantity consists of two components, e.g. complex S-parameter. In graphical representations the dimension is determined by the number of components shown in one subplot.

The uncertainties are computed with linear uncertainty propagation. This leads to well known problems when computing the absolute value and phase of small quantities.